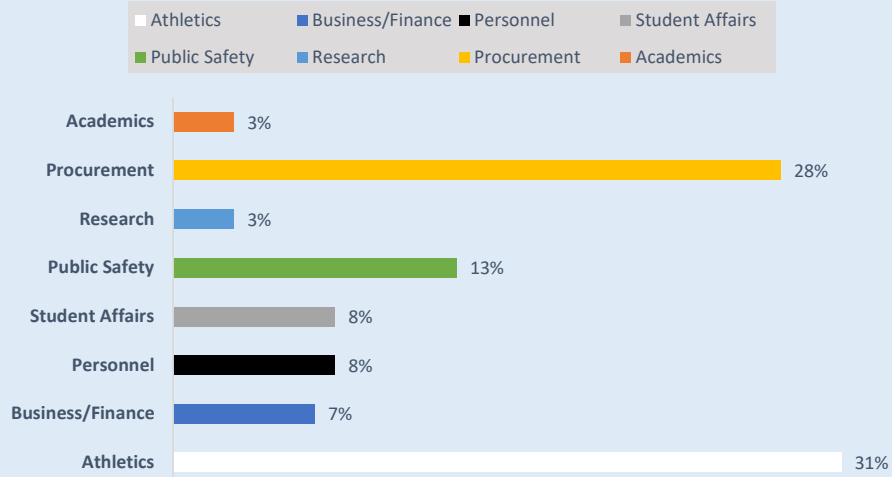


## 2024 Public Records Statistical Report - Iowa State University

Period	Total New Requests Received	Requests Carried Over from Previous Quarter	Total Requests Closed	Requests Closed							Requests Pending at End of Quarter (Inc. Carryover Requests)
				Sent Responsive Documents	No Records Available	Requests Denied	Withdrawn/Removed for Lack of Payment/Response	Response Times (not including withdrawn/closed for non-payment)			
								≤ 10 bus. days	11-20 bus. Days	> 20 bus. Days	
1st Quarter (January 1-March 31)	87	13*	91	73	4	3	11	61	6	13	9
2nd Quarter (April 1 - June 30)	108	9	91	71	5	3	11	62	12	6	26
3rd Quarter (July 1-September 30)	106	26	115	90	8	7	10	74	12	19	17
4th Quarter (October 1 - December 31)											
<b>Total for 2024</b>	<b>301</b>	<b>48</b>	<b>297</b>	<b>234</b>	<b>17</b>	<b>13</b>	<b>32</b>	<b>197</b>	<b>30</b>	<b>38</b>	

\*Discrepancy due to a data entry error

### New Requests by Category (3rd Qtr)



### Affiliation of Requestors (3rd Qtr)

