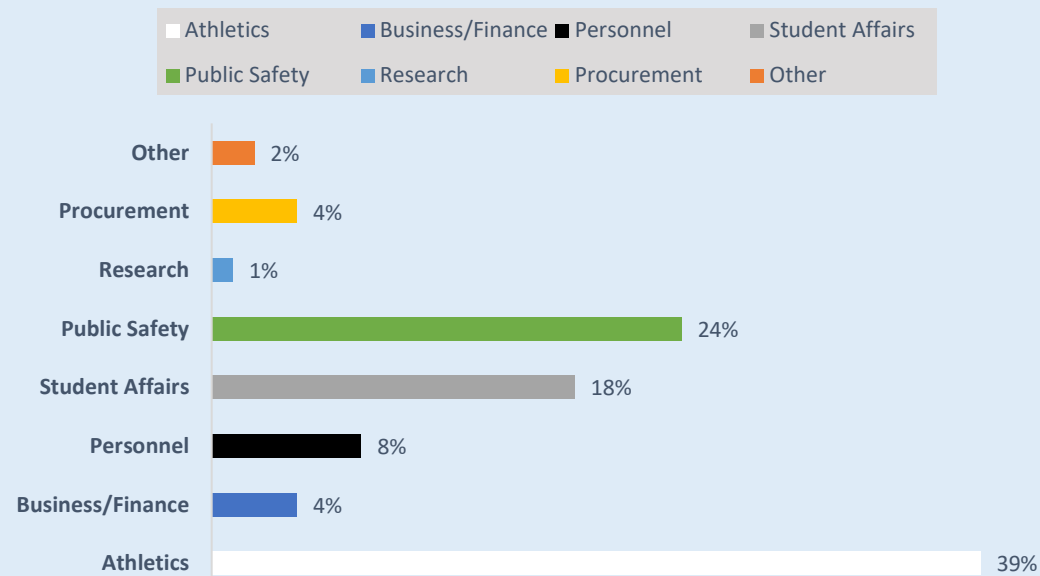


2023 Public Records Statistical Report - Iowa State University

Period	Total New Requests Received	Requests Carried Over from Previous Quarter	Total Requests Closed	Requests Closed							Requests Pending at End of Quarter (Inc. Carryover Requests)
				Sent Responsive Documents	No Records Available	Requests Denied	Withdrawn/Removed for Lack of Payment/Response	Response Times (not including withdrawn/closed for non-payment)			
								≤ 10 bus. days	11-20 bus. Days	> 20 bus. Days	
1st Quarter (January 1 - March 31)	102	30	112	84	5	6	17	77	4	14	20
2nd Quarter (April 1 - June 30)	105	20	103	85	9	2	7	74	7	15	22
3rd Quarter (July 1 - September 30)	93	22	98	77	9	2	10	70	7	11	17
4th Quarter (October 1 - December 31)											
Total for 2023	300	72	313	246	23	10	34	221	18	40	

New Requests by Category (3rd Qtr)



Affiliation of Requestors (3rd Qtr)

