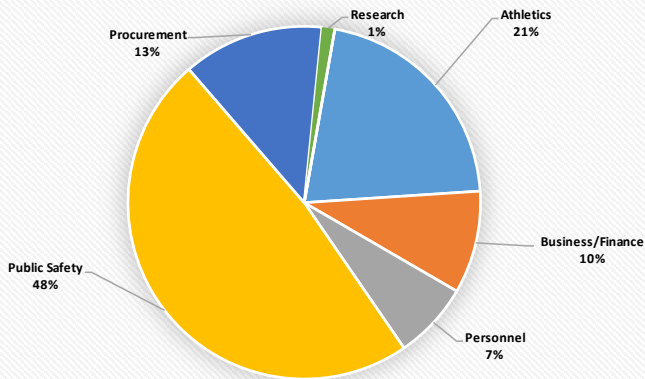


2021 Public Records Statistical Report - Iowa State University

Period	Total New Requests Received	Requests Carried Over from Previous Quarter	Total Requests Closed	Requests Closed							Requests Pending at End of Quarter (Inc. Carryover Requests)
				Sent Responsive Documents	No Records Available	Requests Denied	Withdrawn/Removed for Lack of Payment/Response	Response Times (not including withdrawn/closed for non-payment)			
								≤ 10 bus. days	11-20 bus. Days	> 20 bus. Days	
1st Quarter (January 1- March 31)	116	15	105	85	5	3	12	76	5	12	26
2nd Quarter (April 1 - June 30)	81	26	90	71	11	2	6	62	2	20	17
3rd Quarter (July 1- September 30)	105	17	92	70	9	7	6	73	4	9	30
4th Quarter (October 1 - December 31)	90	30	90	77	7	2	4	52	15	19	30
Total for 2021	392	88	377	303	32	14	28	263	26	60	

New Requests by Category (4th Qtr)



Affiliation of Requestors (4th Qtr)

